



Features:

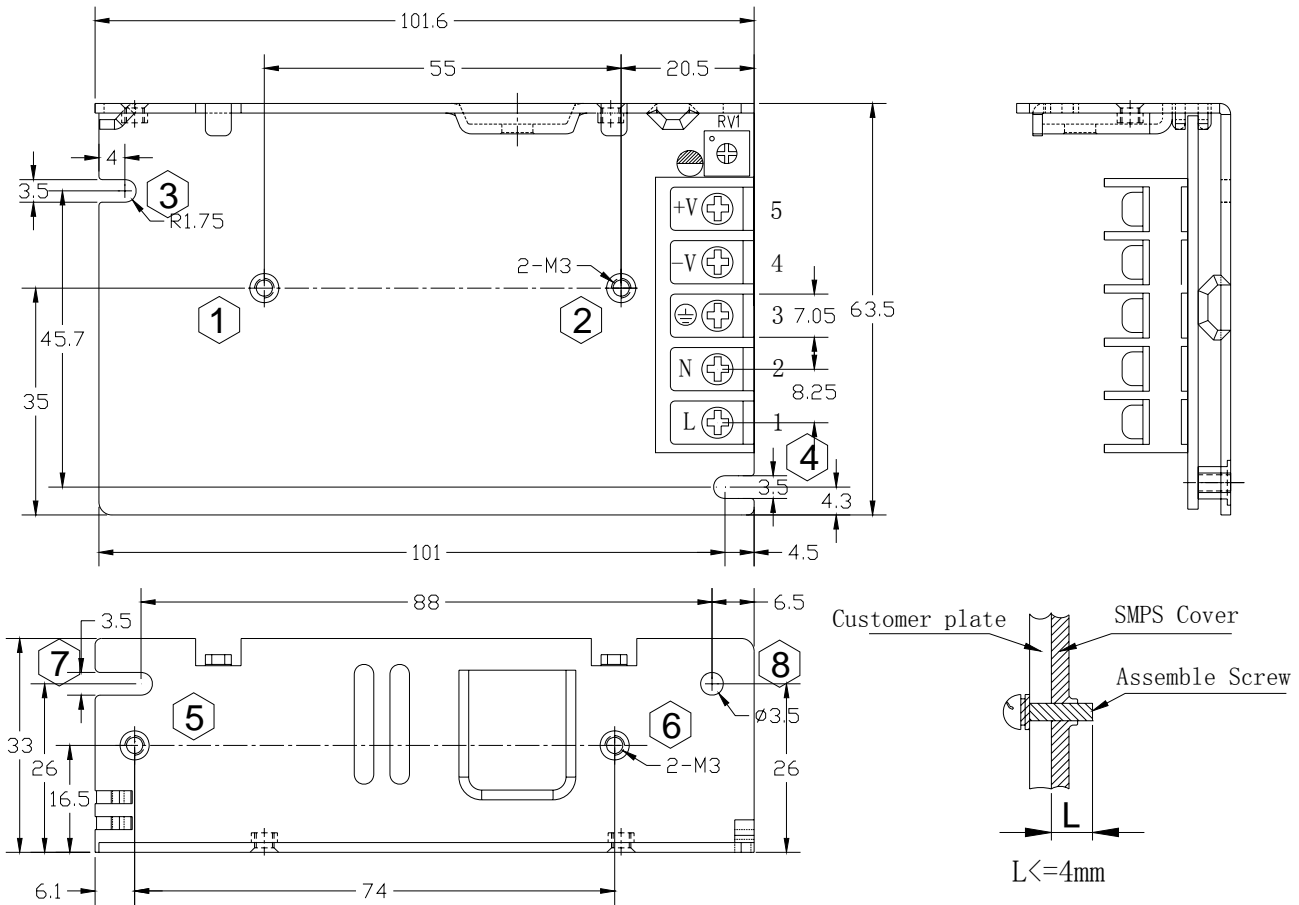
- No Load power consumption<0.5W
- Universal AC input range
- Miniature size,high power density,high efficiency,long life and high reliability
- Withstand 300VA surge input for 5 sec.
- Output protections: OLP/OVP/SCP
- Wide operating ambient temp (-25℃~70℃), 100% @50℃、60%@70℃
- Operating altitude up to 5000M
- All using 105℃ long life electrolytic capacitors.
- 100% full load burn-in test
- Easy assembling from top side
- PCB soldering side with conformal coating
- Suitable for critical applications
- 3 years warranty

SPECIFICATION

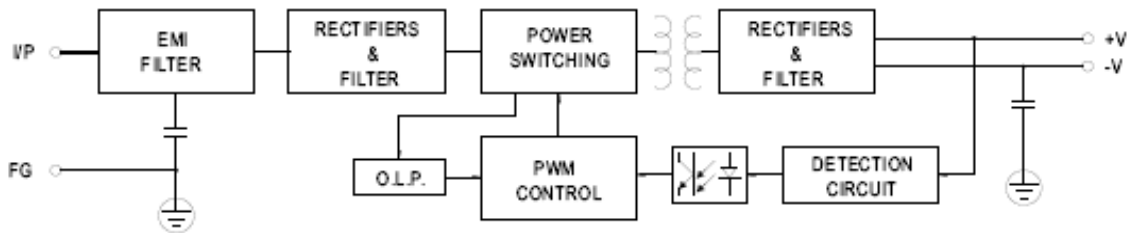
MODEL		PD-35-5	PD-35-12	PD-35-15	PD-35-24	PD-35-48	
OUTPUT	DC Output	5V	12V	15V	24V	48V	
	Rated Current	6A	3A	2.4A	1.5A	0.76A	
	Current Range	0-6A	0-3A	0-2.4A	0-1.5A	0-0.76A	
	Ripple and Noise	0-70℃	<50mV	<80mV	<120mV	<120mV	<180 mV
		Note 2 -25-0℃	<80mV	<180mV	<200mV	<200mV	<240mV
	Voltage ADJ. Range	-5%~+10% of rated output voltage					
	Voltage Accuracy	±3.0%	±3.0%	±3.0%	±3.0%	±3.0%	
	Line Regulation	±0.5%	±0.5%	±0.5%	±0.5%	±0.5%	
	Load Regulation	±1.0%	±1.0%	±1.0%	±1.0%	±1.0%	
	Set-up Time	< 1S (230Vac input, Full load);					
	Hold up Time	> 20mS(230Vac input, Full load); > 10mS(120Vac input, Full load)					
Temperature Coefficient	±0.03%/℃						
Overshoot and Undershoot	<5.0%						
INPUT	Voltage Range	90Vac-264Vac, 127-370Vdc					
	Frequency Range	47Hz-63Hz					
	Efficiency (Typical)	115Vac input	79%	83%	85%	86%	87%
		230Vac input	80%	84%	86%	87%	88%
	AC Current (max.)	<1A(max)					
	Inrush Current (Typical)	<50A@230Vac Cold start					
Leakage Current	Input—output:<3.5mA Input—PG:<0.25mA						
PROTECTION	Over Load	105%-150% of rated output current, constant power,auto recovery					
	Over Voltage	105%-150% of rated output voltage, Constant Voltage					
	Short Circuit	Long-term mode, auto recovery					
ENVIRONMENT	Operating amb. Temp. & Hum.	-25℃-70℃; 20%-90%RH No condensing (refer to the derating curve)					
	Storage Temp. & Hum.	-40℃-85℃; 10%-95%RH No condensing					
SAFETY & EMC Note 3	Safety Standards	UL60950-1 2 nd Ed; IEC 60950-1:2005(2 nd Ed) ;EN60950-1:2006					
	Withstand Voltage	Primary-Secondary:3.0kVac; ≤10mA .Primary-PG:1.5kVac; ≤10mA. Secondary-PG:0.5kVDC;≤10mA.					
	Isolation Resistance	≥100M ohms					
	EMC Emission	Compliance to EN55022,EN55024 ClassB					
	Harmonic Current	Compliance to EN61000-3-2,-3					
	EMC Immunity	Compliance to EN61000-4-2,3,4,5,6,8,11;EN55024,EN61000-6-2 heavy industry level					
OTHERS	MTBF (MIL-HDBK-217F)	More than 200,000Hrs (25℃, Full load)					
	Dimension (L*W*H)	101.6×63.5×33mm					
	Packing	60PCS/CTN, 15.18KGS, 0.06CBM					
	Cooling method	Cooling by free air convection					
NOTE	<ol style="list-style-type: none"> 1. All parameters NOT specially mentioned are measured at 230Vac input, rated load and 25℃ of ambient temperature. 2. Measured at 20MHz of bandwidth by using a 12" twisted pair-wire terminated with a 0.1 uF & 10uF parallel capacitor. 3. The SPS is considered a component which will be installed into final equipment. The equipment must be re-confirmed that it still meets EMC directives. 4. Powerld offer accessories for Din-35 rail bar. Please contact sales staff for details. 						

■ Mechanical Specification

Unit: mm



■ Block Diagram



■ Derating Curve

